
IR550A USB Driver Installation Guide

Installation Guide

by ERSA GmbH Germany

Content

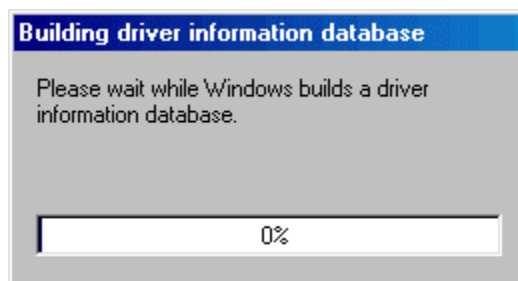
1.	USB Driver Installations	1
1.1.	Windows 98.....	1
1.2.	Windows ME.....	5
1.3.	Windows 2000	7
1.4.	Windows XP.....	14

1. USB Driver Installations

1.1. Windows 98

This help file describes the installation procedure of the IR550A USB drivers under Windows 98 and gives information on what to look for if installation doesn't go as planned. The driver installation is a two stage process, firstly the USB section of the driver is loaded followed by the COM Port driver.

The CD-ROM provided should be inserted into the CD-ROM drive of the PC prior to plugging in the device. Plug in your device. This should bring up a "Building Driver Information Database" followed by the Add New Hardware Wizard.





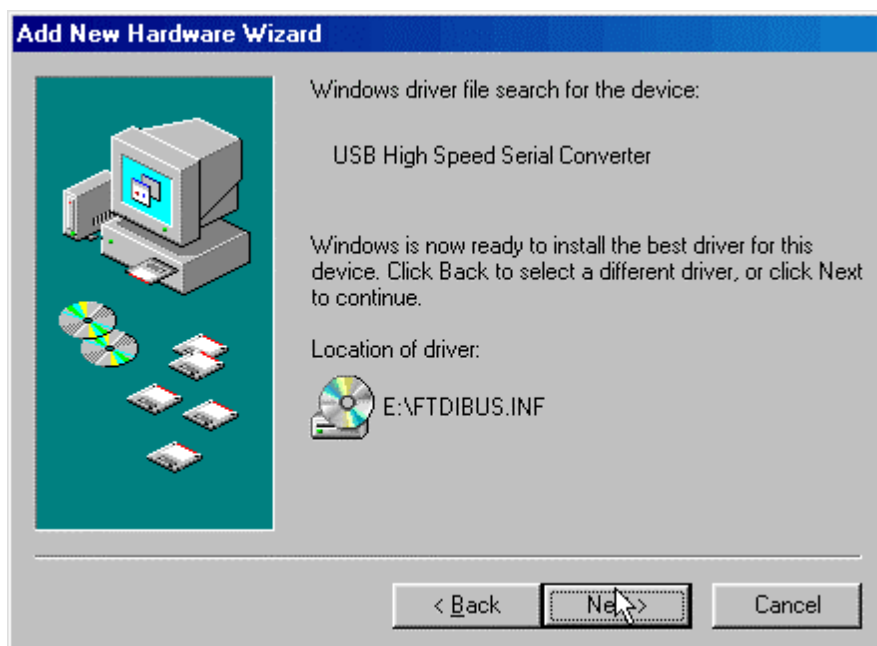
If the 'IR550A USB version' device has been detected correctly this will appear on the screen. Click on "Next" to continue.



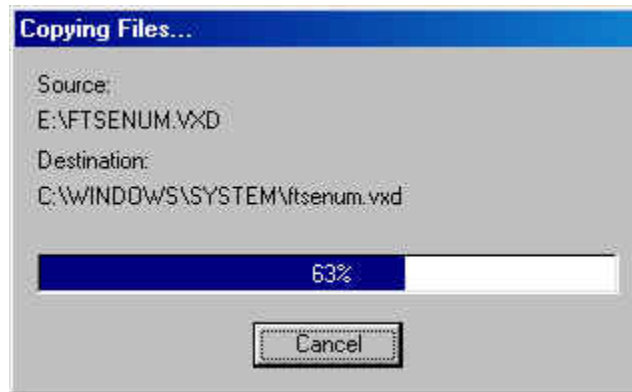
Make certain that the "Search for the best driver" button is checked then click on "Next" to continue.



Select the CD-ROM drive as the search option. Make certain that the other options are not checked then click on "Next" to continue.



Windows 98 should find the FTDIBUS.INF file located in the drivers directory of the CD ROM. This instructs Windows on how to install the USB section of the drivers. Click on "Next" to continue.



Windows will now automatically copy the USB and COM Port driver files from the CD ROM to it's system directory and install them.

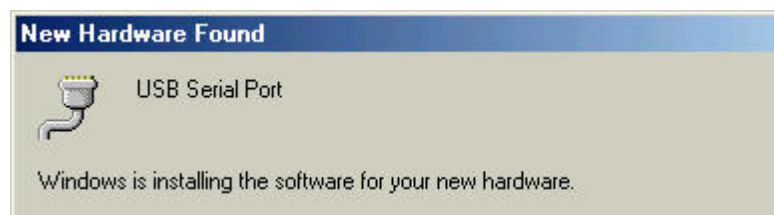


After the driver installation is complete, this screen will appear. Click on "Finish" to complete the installation.

1.2. Windows ME

This document describes the installation procedure of the IR550A USB drivers under Windows ME and gives information on what to look for if installation doesn't go as planned. The driver installation is a two stage process, firstly the USB section of the driver is loaded followed by the COM Port driver.

The CD-ROM provided should be inserted into the CD-ROM drive of the PC prior to plugging in the device. Plug in your device. This should result in a "New Hardware Found" message followed by a "Driver Database" message followed by the Add New Hardware Wizard.



If the USB device has been detected correctly the name of the device (IR550A USB version) will appear on this screen. Make certain that "Automatic search for a better driver" is checked then click on "Next" to continue. Windows ME will then install the drivers without any more intervention required other then to confirm that the drivers have been installed.



The drivers have now been installed - click "Finish" to end the Windows ME driver install session.

1.3. Windows 2000

This document describes the installation procedure of the IR550A USB drivers and gives information on what to look for if installation doesn't go as planned. The driver installation is a two stage process, firstly the USB section of the driver is loaded followed by the COM Port driver.

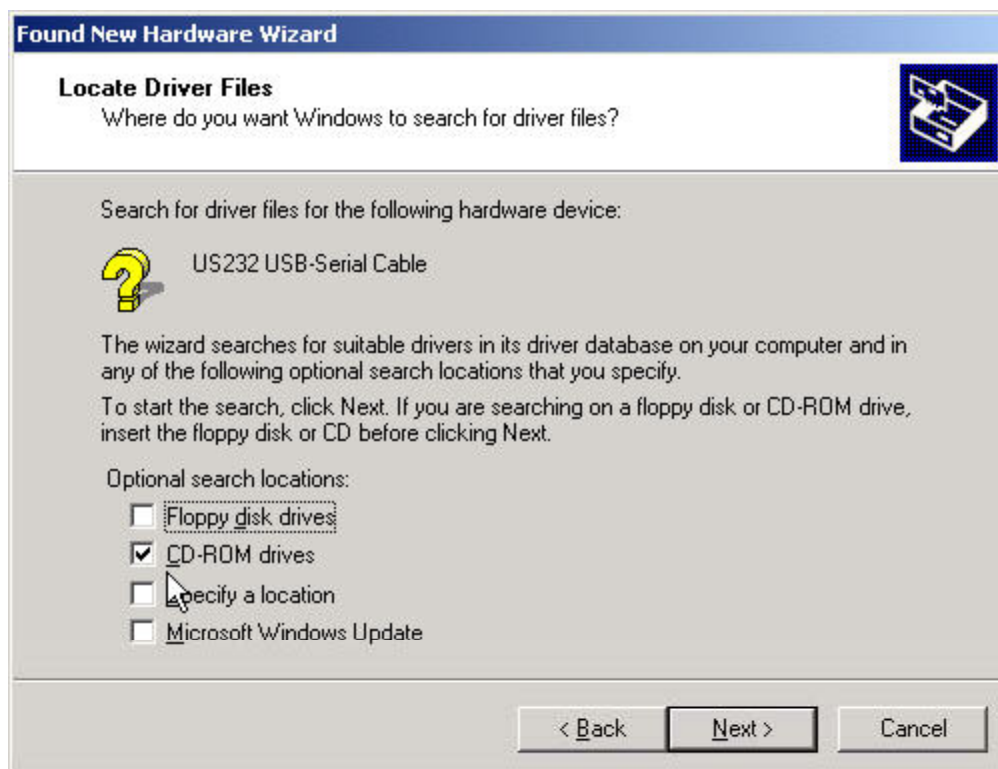
The CD-ROM provided should be inserted into the CD-ROM drive of the PC prior to plugging in the device. Plug in your device. This should bring up a "Found New Hardware" message followed by a "Driver Database" message followed by the Add New Hardware Wizard.



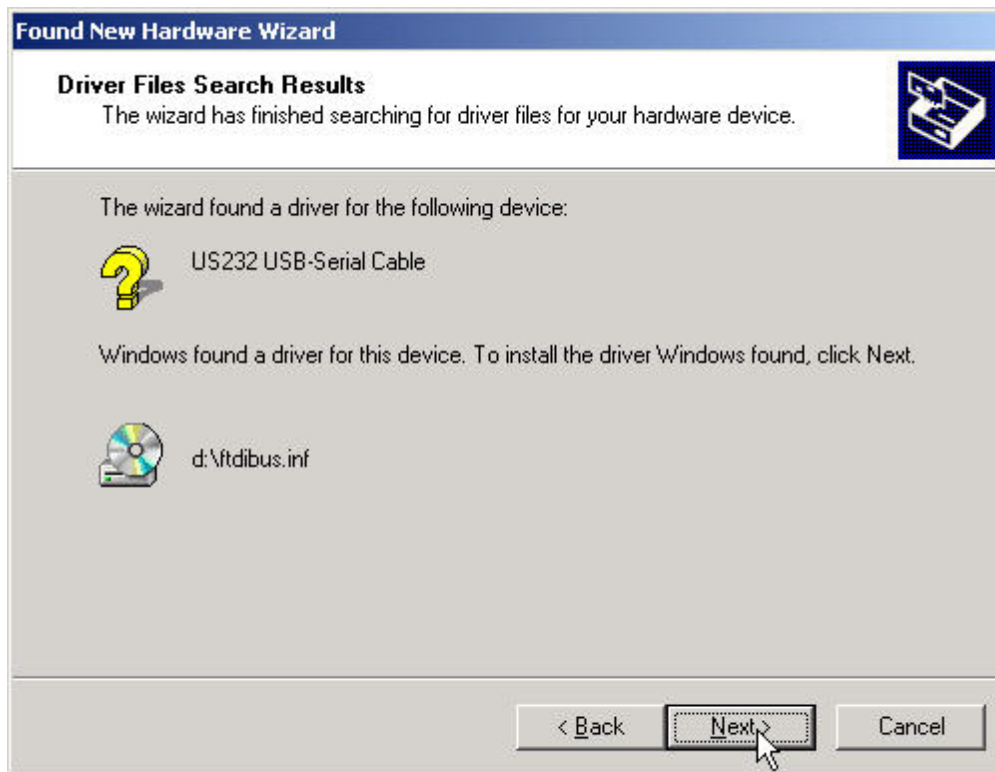
If the USB device has been detected correctly the name of the device (IR550A USB version) will appear on the "Found New Hardware" message. When the Found New Hardware Wizard screen appears, click on "Next" to continue.



Make certain that the "Search for a suitable driver for my device" button is checked then click on "Next" to continue.



Select "CD-ROM drives" as the search option. Make certain that the other options are not checked then click on "Next" to continue.



Windows 2000 should find the FTDIBUS.INF file located in the driver directory of the CD ROM. This instructs Windows on how to install the USB section of the drivers. Click on "Next" to continue.



Windows 2000 will now automatically copy the USB driver files from the CD ROM to it's system directory and install them. Click on "Finish" and Windows 2000 will repeat the installation procedure this time to install the COM port drivers.



Click on "Next" to continue the installation process ...

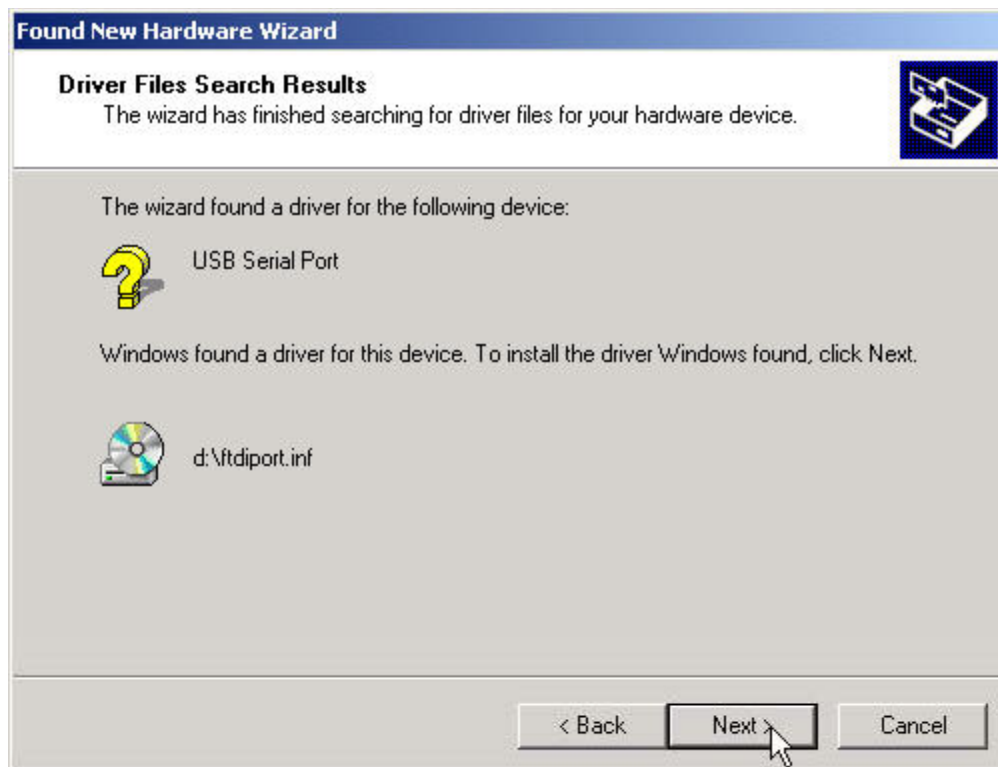


Make certain that the "Search for a suitable driver for my device" button is checked then

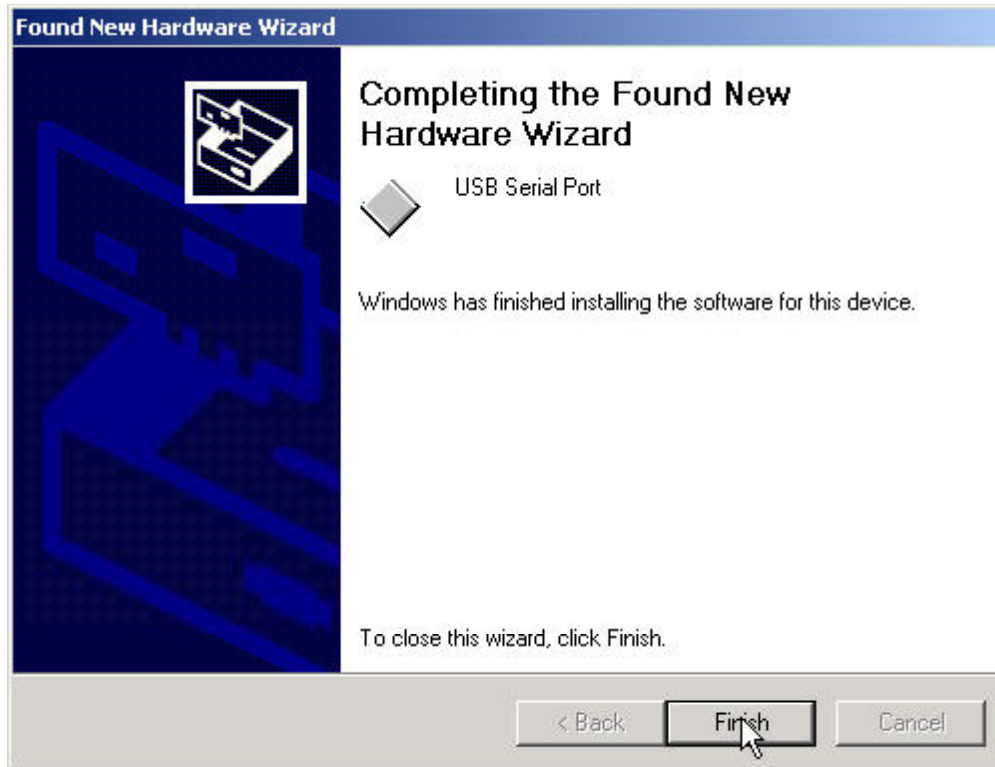
click on "Next" to continue.



Select "CD-ROM drives" as the search option. Make certain that the other options are not checked then click on "Next" to continue.



Windows 2000 should find the FTDIPORT.INF file located in the root directory of the CD ROM. This instructs Windows on how to install the COM Port section of the drivers. Click on "Next" to continue.



Finally, click on "Finish" to complete the installation ...

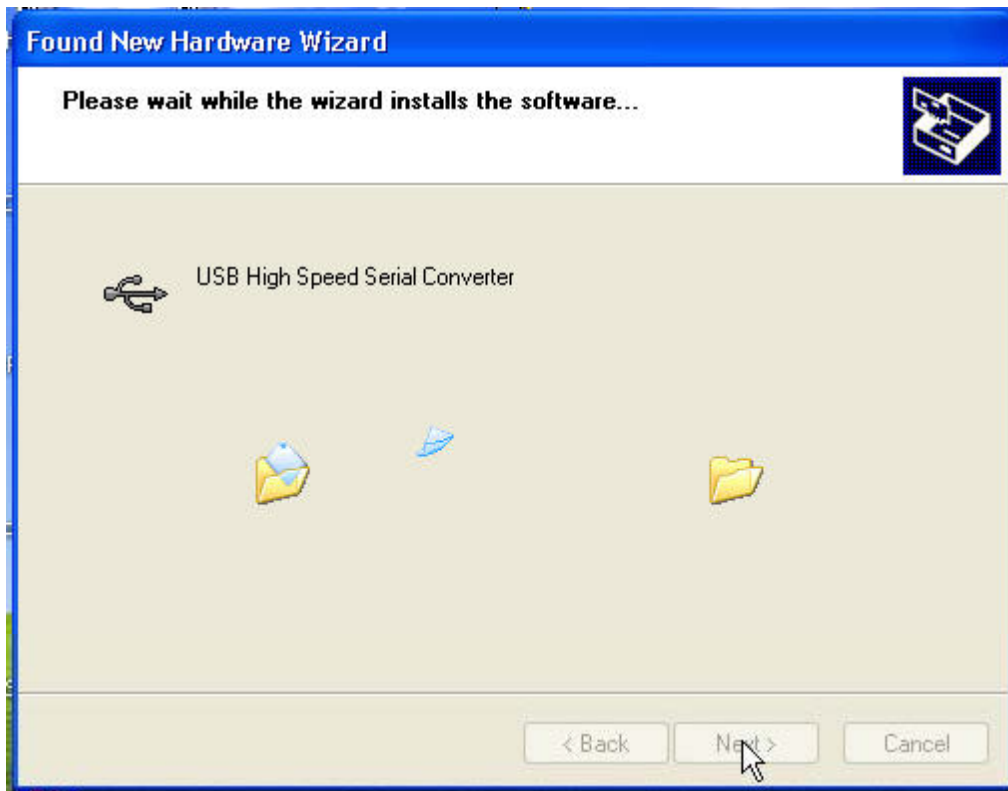
1.4. Windows XP

This document describes the installation procedure of the IR550A USB drivers under Windows XP and gives information on what to look for if installation doesn't go as planned. The driver installation is a two stage process, firstly the USB section of the driver is loaded followed by the COM Port driver.

The CD-ROM provided should be inserted into the CD-ROM drive of the PC prior to plugging in the device. Plug in your device. This should bring up a "Found New Hardware" help bubble and launch the Found New Hardware Wizard. These should describe the Hardware as "IR550A USB version".



Make certain that the "Install the software automatically" option is checked. Click on "Next" to continue.



You may see the above screen during the installation process as Windows XP copies the files from the CD. No user intervention is required.



The drivers do not have a Microsoft WHQL certificate on the disk. ERSA frequently

updates its drivers in response to customer requirements and each update would require a new certificate which would slow down our ability to release new updates. Our drivers have been tested in-house using the Microsoft WHQL test suite and are safe to install in Windows XP. The default button is "STOP Installation" - ignore this and click on the "Continue Anyway" button.



The USB Drivers have now been installed - click the "Finish" button finish the USB driver installation and to install the COM Port drivers. The Found New Hardware wizard will re-launch for the second part of the driver installation as shown below.



After the driver installation is complete, this screen will appear. Click on "Finish" to complete the installation. This time, the Hardware Wizard will display "USB Serial Port" as being the software it wants to install.



Make certain that the "Install the software automatically" option is checked. Click on "Next" to continue.



The reason for this message is explained above. The default button is "STOP Installation" - ignore this and click on the "Continue Anyway" button.



Click the "Finish" button to complete the second part of the driver installation. The Help bubble should inform you that the new hardware is installed and ready to use.

